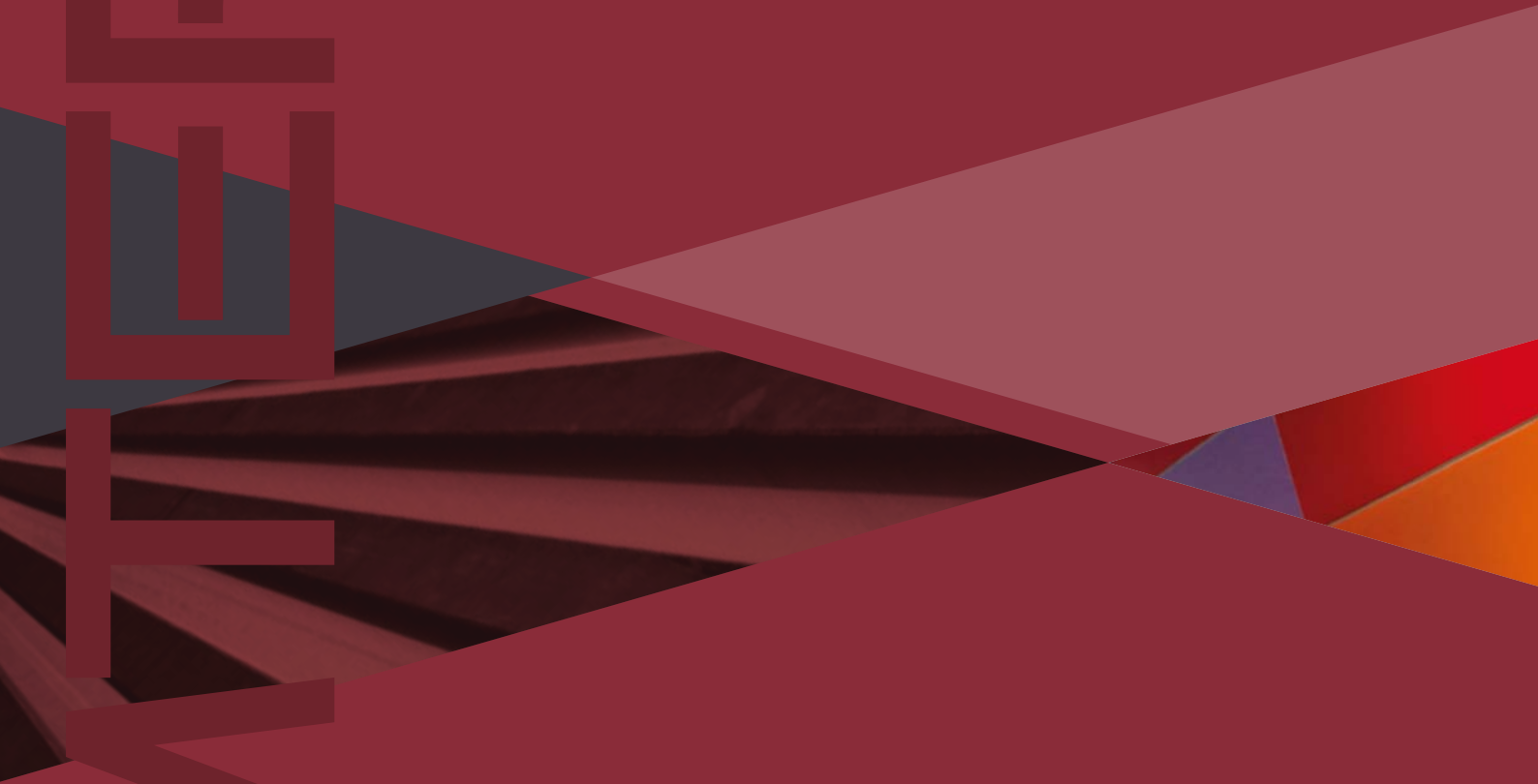
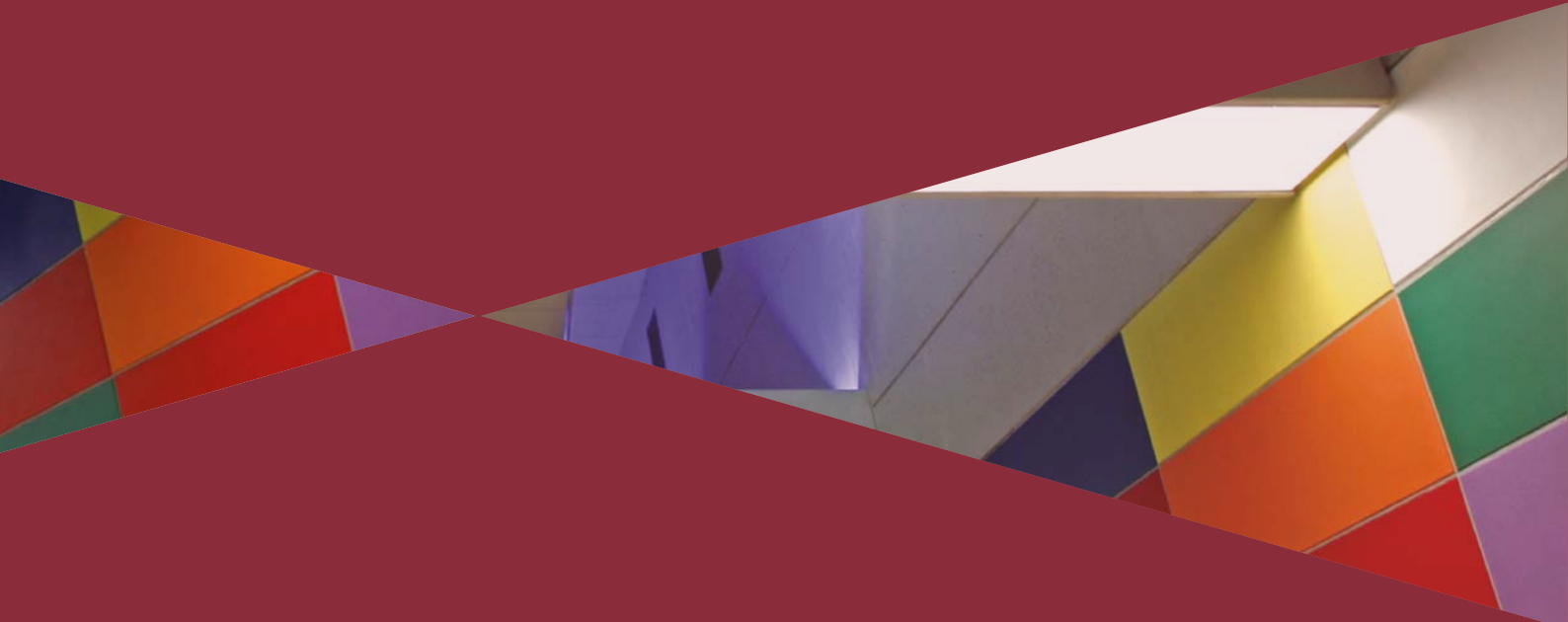


FORMATTING



INTRODUCTION



Főmterv was established in 1950 and has successfully combined the values of many years of experience and engineering tradition with the ability of continuous technical renewal and adaptation to changing markets in the past more than six decades. Our corporate culture based on traditions has made it a natural requirement for all young new hires to think comprehensively and have a comprehension of the whole design process. A specialist staff in all technical areas, which is accomplished, competent and experienced, is a key factor of successful projects. The whole design process from conceptual designs and system designs to the preparation of detailed designs is carried out in-house. The complexity of Főmterv ensures that all engineering areas involved in the construction of a facility can be prepared within a single design workshop. I

n the area of complex transport facilities, in addition to complete road, railway and traffic engineering design, transport systems are devised conceptually and network analyses and simulations are carried out as well. In the area of utilities, in addition to the design of water, sewer, gas, district heating and electrical networks, public lighting and mechanical systems complement the range of design areas. Bridge and engineering structure design includes retaining walls and small engineering structures through river bridges to the engineering structures of special facilities such as underground stations and subways. Our geotechnical division analyses geological samples in our own laboratory.

Főmterv was transferred to the ownership of its own employees during its privatisation in 1992. With its balanced operation, a staff of about 300 and sales amounting to about 17 million Euro per year, our company has been a reliable partner in the area of infrastructure design, and plays an important role in works in Hungary over past more than 20 years since then.

We perform our work with commitment to, and responsibility for, our profession every day, in continuation of engineering traditions with a great past in Hungary.

Tibor Keszthelyi
Chairman - CEO

FŐMTERV PAST AND PRESENT

1950



ESTABLISHED WITH A STAFF OF 35



It was transferred to the ownership of its employees in 1992, and having been operating for 65 years by now and maintaining its leading designer's role in the capital, FŐMTERV has extended its activities to the whole territory of the country and is also actively present in several countries abroad.

It was established by the Metropolitan Council from highly experienced designers to carry out civil engineering design tasks required for the reconstruction of Budapest after the Second World War.



1992



300 EMPLOYEES SINCE 1992

- KÁLVIN TÉR, 1973 / 2014
- FERENCIEK TERE, 1973 / 2010 / 2014
- KÁROLY KRT. 1959 / 2014



- BAROSS TÉR (EASTERN RAILWAY STATION), 1959 / 2014
- BLAHA LUJZA TÉR, 1960 / 2007
- SZÉCHENYI TÉR, 1959 / 2014
- ASTORIA, 1963 / 2009

ROAD DESIGN, NETWORK AND TRAFFIC ENGINEERING DESIGN, AND DESIGN OF RAILWAY LINES AND EQUIPMENTS



- CSARNOK TÉR, 2010
- FŐVÁM TÉR, 2010
- METRO LINE 4, MÓRICZ ZSIGMOND KÖRTÉR, 2014



COMPLEX URBAN, REGIONAL AND NATIONAL NETWORKS
 CONCEPTUAL TRANSPORT PLANNING
 TRAFFIC MODELLING, SIMULATION
 MOTORWAYS AND HIGHWAYS
 PUBLIC ROADS IN URBAN AND RURAL AREAS
 TRAFFIC ENGINEERING, CONTROL ENGINEERING
 PUBLIC TRANSPORT NETWORKS
 COMPLEX RAILWAY LINES
 URBAN AND NATIONAL NETWORKS
 PARKING SYSTEMS AND FACILITIES
 CYCLE TRACKS, PRDESTRIAN AND ATTENUATED ZONES



- ERZSÉBET BRIDGE RAMP IN PEST, 2014
- VOLÁNBUSZ, NORTH PEST TERMINAL, 2010

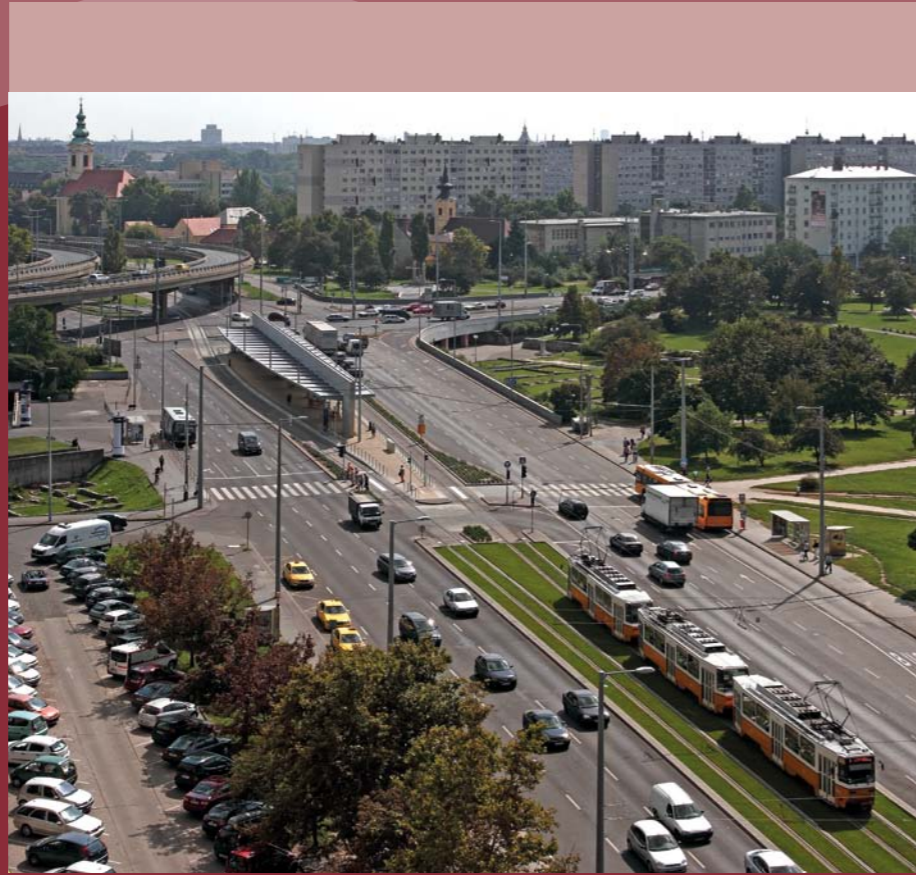


- KELENFÖLD-TÁRNOK RAILWAY LINE, KASTÉLYPARK RAILWAY STATION, 2013

■ TRAM LINE 1, 2014



■ FERENCIEK TERE, 2013



■ KÁROLY KÖRÚT, 2012



■ VESZPRÉM, 2014
■ BUDAÖRSI ÚT, 2011



■ M60 MOTORWAY, 2010
■ SZÉKESFEHÉRVÁR RAILWAY HUB, 2014

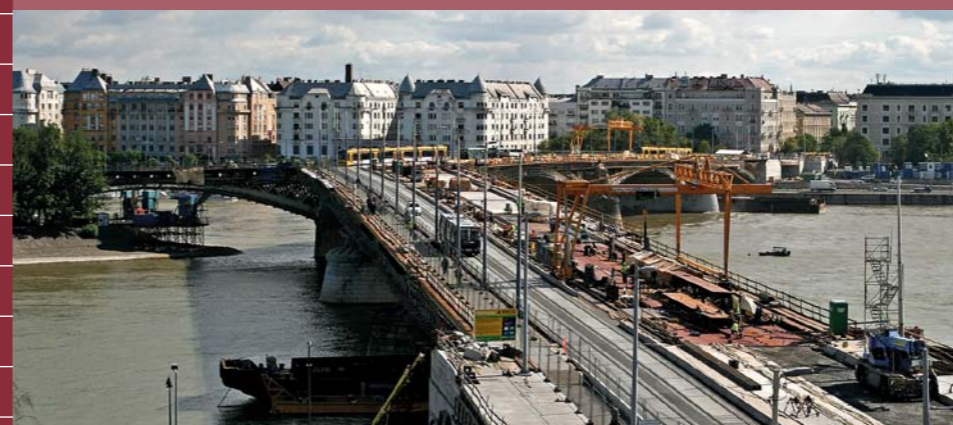
DESIGN OF BRIDGES AND ENGINEERING STRUCTURES SOIL MECHANICS DESIGN CONSTRUCTION PLANNING AND SCHEDULING



■ PENTELE BRIDGE, 2006 | 2007
■ SZABADSÁG BRIDGE, 2010



ROAD AND RAILWAY UNDERPASSES AND FLYOVERS
PEDESTRIAN BRIDGES, PEDESTRIAN SUBWAYS AND HALLS
RIVER BRIDGES
UNDERGROUND ENGINEERING STRUCTURES, CONSTRUCTIONS
WAREHOUSE/DEPOT BUILDINGS, INDUSTRIAL FACILITIES AND BUILDING CONSTRUCTIONS
PARKING FACILITIES AND UNDERGROUND PARKING GARAGES
OPTIMISATION OF THE REFURBISHMENT OF ENGINEERING STRUCTURES, LIFECYCLE DESIGN
RETAINING WALLS, LINING WALLS
CONVENTIONAL AND SPECIAL FOUNDATIONS
STRUCTURAL TESTING OF BRIDGES AND ENGINEERING STRUCTURES
SOIL MECHANICS LABORATORY WORKS AND EXPERT'S REPORTS ON SOIL MECHANICS
OPTIMISATION, SCHEDULING AND MONITORING OF CONSTRUCTION WORKS



■ MARGIT BRIDGE, 2012 ■ MARGIT BRIDGE, 2010



■ FISHERMAN'S BASTION, 2011



■ SZOLNOK RAILWAY BRIDGE, 2014



■ SIBRI MIKLÓS HIGHWAY BRIDGE, 2014
 ■ M7 MOTORWAY, BRIDGE M70, 2008



■ SAVOYAI SÉTÁNY, 2012



■ M7 MOTORWAY, 2006
 ■ "SZÁZLÁBÚ" BRIDGE, 2014

■ PETŐFI BRIDGE, 2013



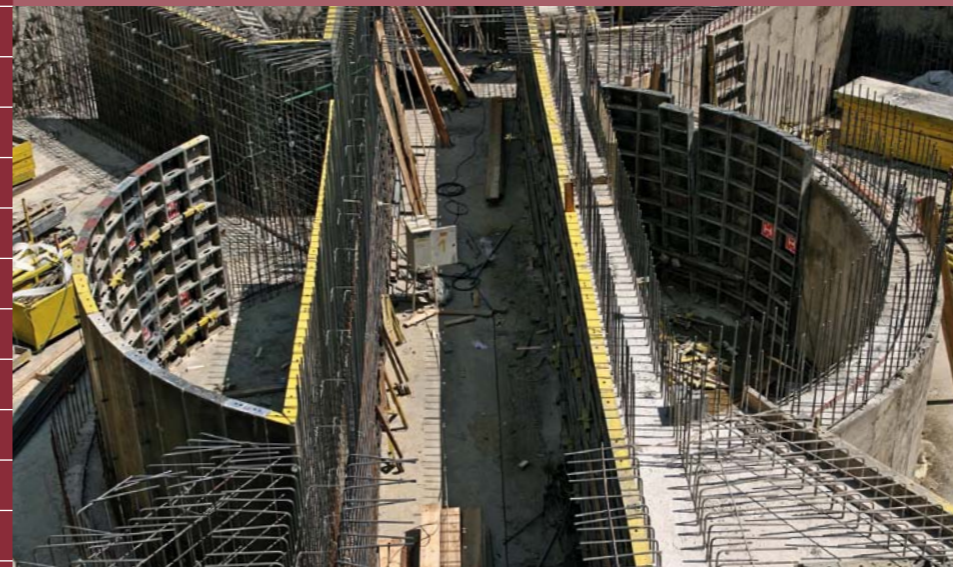
■ SÁRVÁR, NÁDASY FERENC BRIDGE, 2005

WATER SUPPLY AND WATER MANAGEMENT, SEWER CONSTRUCTION, SEWAGE TREATMENT, GAS SUPPLY, PUBLIC LIGHTING AND UTILITY ENGINEERING



- BUDA SEWER MAIN, 2009
- DIANA UTCA, SEWER CONSTRUCTION, 2007
- FŐVÁM TÉR, WATER SUPPLY, 2008

- CONCEPTUAL DESIGN OF MUNICIPAL SUPPLY
- DESIGN AND REFURBISHMENT OF PIPE NETWORKS
- MECHANICAL EQUIPMENT, WATER TREATMENT PLANTS AND POWERHOUSES
- SURFACE DRAINAGE, FLOOD PROTECTION, AND RIVER BED CONTROL
- DRAINS, DRAIN SYSTEMS, SEWER SYSTEMS, LOW LIFT PUMPING STATIONS AND POWERHOUSES
- SEWAGE TREATMENT EQUIPMENT
- LOW, MEDIUM AND HIGH PRESSURE GAS PIPELINES
- LOW, MEDIUM AND HIGH VOLTAGE ELECTRICAL CABLES
- PUBLIC AND DECORATIVE LIGHTING IN PUBLIC AREAS, DISTRICT HEATING PIPELINES AND EQUIPMENT
- PROVISION OF COMPREHENSIVE UTILITY SERVICES TO INDUSTRIAL AND COMMERCIAL SITES AND RESIDENTIAL AREAS
- PROVISION OF (COMPREHENSIVE) UTILITY SERVICES TO MUNICIPALITIES AND REGIONS
- NETWORK AND FACILITY DESIGN
- HEAT SUPPLY AND DISTRICT HEATING DESIGN, ENERGY SUPPLY



- KÁROLY KÖRÚT, SEWER CONSTRUCTION, 2011
- FERENCVÁROS SEWER PUMPING STATION, 2010

■ VERSENY UTCA SEWER LINING, 2007



■ KÁPOSZTÁSMEGYER, WATERWORKS, 2010



■ KINIZSI UTCA, TRENCHLESS CONSTRUCTION, 2012
■ NÉPLIGET, SEWER MAIN, 2012



■ PESTERZSÉBET, BYPASS COLLECTOR SEWER, 2010



■ METRO LINE 4 VENTILATION, 2014



■ RÓNA UTCA SEWER CONSTRUCTION, 2012

■ PILISCSABA, GAS PIPELINE CONSTRUCTION, 2008



■ ŐRMEZŐ, DISTRICT HEATING, 2013

SUSTAINABILITY

FŐMTERV Mérnöki Tervező Zrt. has been successfully operating its quality management system since 1997 and its integrated quality and environmental management system since 2012 without interruption. The quality and environmental management system is a means to ensure that we always deliver reliable, high quality work and guarantee participation in tenders, continuously providing customised services to a high standard to all of our customers. In addition to complying with legislation, our company commits itself to preventing environmental pollution and minimising risks arising from the operation of the company; as a means to do so, it continuously decreases its release of electronic, paper and hazardous wastes and the energy used by its facilities. In order to reduce fossil fuel use, it encourages and tries to promote transport and commuting to work by bicycle among its employees with its developments. Its commitment to environmental protection appears not only at the company level, in the everyday life of our employees, but also in the services and products provided by us. We try to design the proposed facilities within the framework set by the Principal in such a way that they serve sustainable development and environmental protection to the greatest extent possible. Among other things, the above goals are also served by tram tracks seeded with grass, which increases green areas, railway platform canopies fitted with solar panels as well as sewage removal and treatment facilities.

We expect ourselves to ensure that professional references, the traditional reputation of our company, responsibility for our environment, trust and reliability appear together in each and every service and innovative development created. Our goal is to ensure that commitment to quality, environmental protection and continuous development becomes an inner drive and develops a need for exactingness in every employee. Our company agrees also for the future to unceasingly improve the quality of its work and environmental performance by continuously developing its evaluation system and setting newer and newer goals.



FŐMTERV
H-1024 Budapest, Lövőház u. 37.
Telephone: +36 1 345 9500
Fax: +36 1 345 9550
E-mail: fomterv@fomterv.hu
Web: www.fomterv.hu

2014

Edited by Rita Meiszter
Photo by Ágnes Szikszay
Graphic design by Dániel Nagy,
Stalker Stúdió
Managing publisher: Tibor Keszthelyi,
Chairman and CEO



